



2021-22 Adopted State Legislative Platform

Contra Costa County

Website: www.contracosta.ca.gov

Adopted January 19, 2021

Amended March 30, 2021



TABLE OF CONTENTS

Introduction	3
County Profile	3
Demographic Highlights	3
Governance	4
Legislative Platform Purpose	6
Mission, Vision, and Values	6
Sponsored bills and legislative priorities	7
Advocacy Priorities	7
Principles and Policy Statements	8
Agriculture and Weights & Measures	8
Animal Services	8
Child Support Services	9
Climate Change	9
The Delta	11
Economic Development	11
Elections	12
Emergency Preparedness, Emergency Response	12
Flood Control and Clean Water	12
Finance and Administration	13
Health Care	14
Homeless Services	17
Human Services	18
Justice Systems	22
Land Use/Community Development/Natural Resources	23
Library	24
Telecommunications and Broadband	24
Transportation	24
Veterans	26
Waste Management	26
Workforce Development	28

INTRODUCTION

County Profile

One of the original 27 counties established in California in 1850, Contra Costa County is home to more than one million people, making it the ninth most populous county in the state. Physically, Contra Costa is over 733 square miles and extends from the northeastern shore of the San Francisco Bay easterly about 50 miles to San Joaquin County. The County is bordered on the south and west by Alameda County



and on the north by the Suisun and San Pablo Bays. The western and northern shorelines are industrialized, while the interior sections are suburban/residential, commercial and light industrial.

About 40 percent of the county is under the jurisdiction of 19 incorporated cities and towns, and large portions of the remaining unincorporated area are part of public park systems and a habitat conservancy.



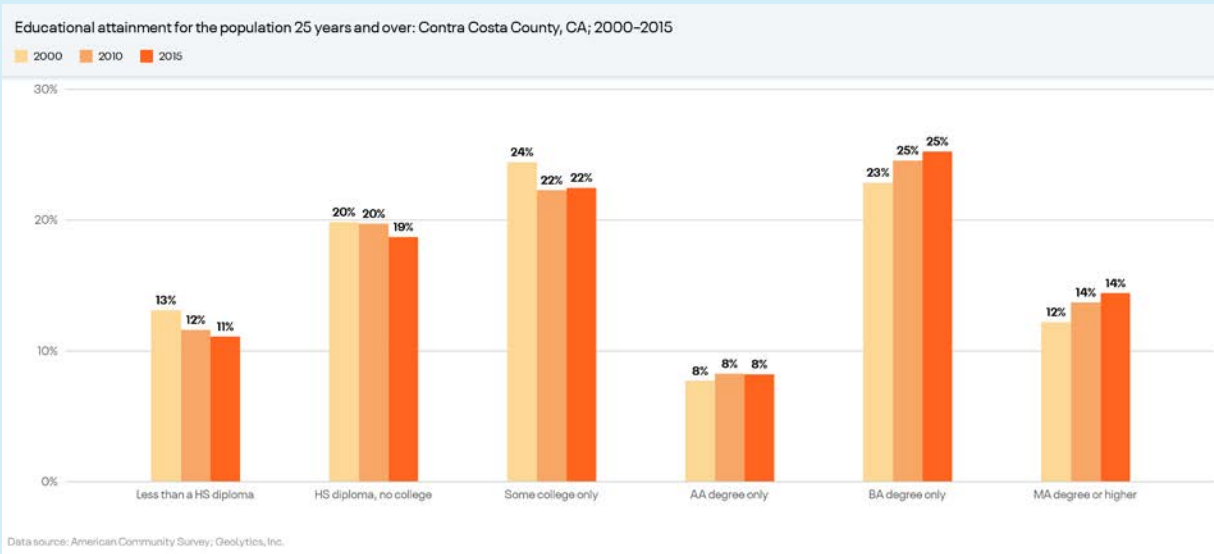
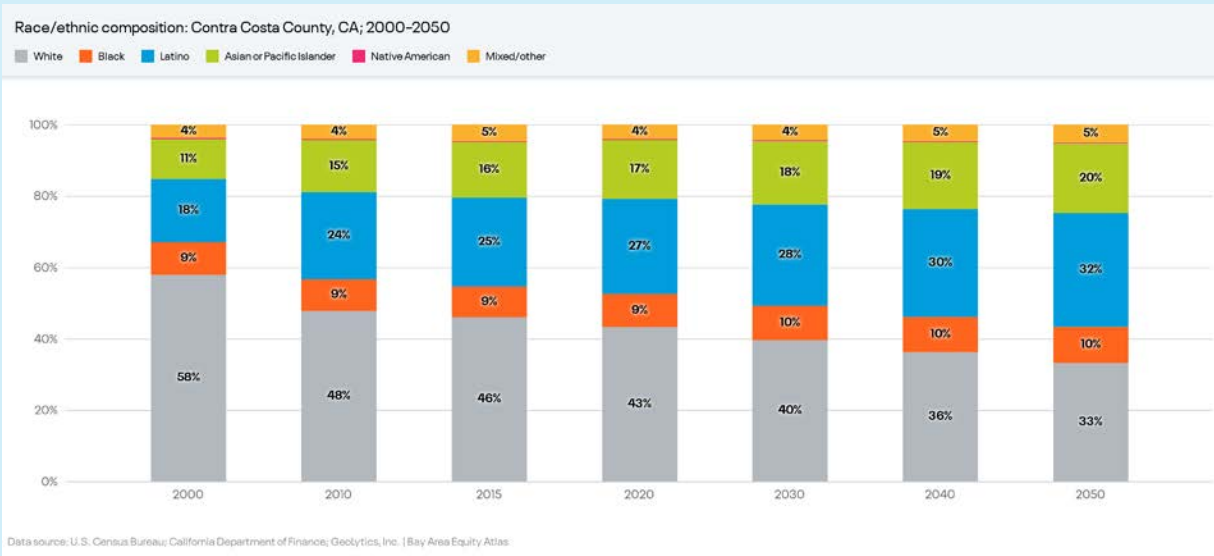
Contra Costa County is very diverse, with communities that range from small agricultural places like Byron, with a density of about 200 people per square mile, to urban population centers like Contra Costa Centre, a bustling transit village with a density of 8,400 people per square mile.

With its strategic location as **The Capital of The Northern California Mega-Region™** and easy access to suppliers and customers, Contra Costa is a business destination full of opportunity.

Demographic Highlights

Approximately 1.1 million people live in Contra Costa County; only 15%, or about 172,513 people, reside in the unincorporated areas of the county. The median age of County residents is 39 years old. Our population of seniors age 60 or older is expected to grow by approximately 47% between 2020 and 2050, making this age group our fastest growing.

The majority (44%) of County residents are white, with significant proportions of Asian (16.5%) and African American (8%) people. The Census tracks Latinx ethnicity separately from other populations; in total, the Hispanic/Latino population makes up approximately 26% of the total population.

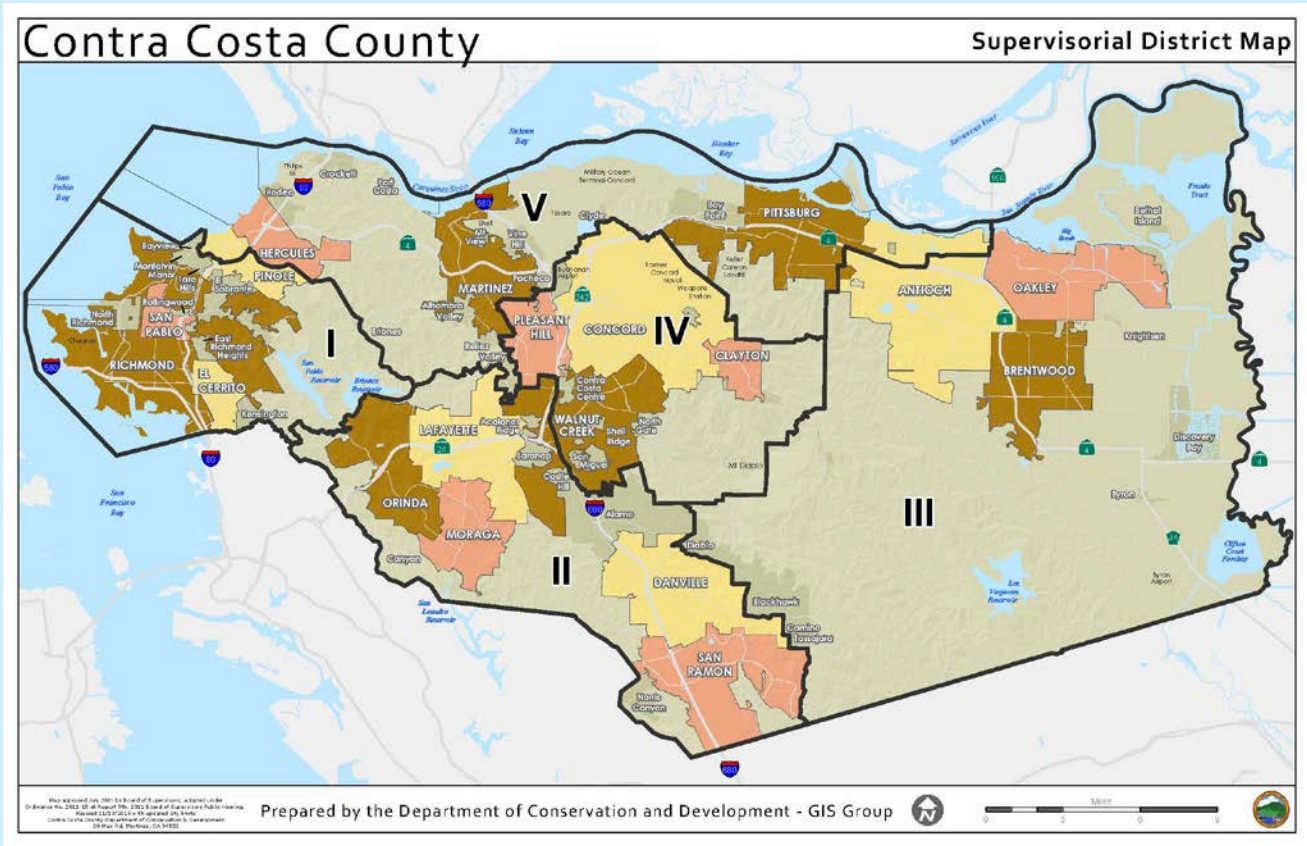


Governance

A five-member Board of Supervisors, each elected to four-year terms, serves as the legislative body of the County, which has a general law form of government. Also elected are the County Assessor, Auditor-Controller, Clerk-Recorder, District Attorney, Sheriff-Coroner and Treasurer-Tax Collector. The County Administrator, Monica Nino, is appointed by the Board and is responsible for running the day-to-day business of the County.

Contra Costa County Board of Supervisors:

- District I: John M. Gioia
- District II: Candace Andersen
- District III: Diane Burgis
- District IV: Karen Mitchoff
- District V: Federal D. Glover



Legislative Platform Purpose

The Legislative Platform establishes the priorities, principles, and policy statements of the Contra Costa County Board of Supervisors and creates the basis for its advocacy efforts, alerting our legislative partners of the greatest needs of our residents and where we need additional help. The Platform provides general direction to County departments and agencies, legislative advocates, delegation members, and the public on our positions on key policy matters that would impact the way the County does business. The Platform also includes new bill requests for which legislation is sought from Contra Costa County.

Throughout the legislative session, the County will review and take positions on various policy and State Budget items. When a recommended position is consistent with existing County policy, as adopted in the Platform, the CAO's office or department staff will prepare a County position letter for signature by the Board Chair.

Contra Costa County has also adopted a **Delta Water Platform** to identify and promote activities and policy positions that support the creation of a healthy Sacramento-San Joaquin Delta. Contra Costa County uses this Delta Water Platform to guide its actions and advocacy regarding the future of the Delta.

Mission, Vision, and Values

Contra Costa County has adopted the following Mission, Vision and Values statement:



The graphic features the Contra Costa County seal in the top left corner. The title "Contra Costa County" is prominently displayed in a large, white, serif font. Below the title, the text is organized into three columns: Mission, Vision, and Values. The Mission section states that the county is dedicated to providing public services that improve the quality of life for residents and the economic viability of businesses. The Vision section describes the county as a world-class service organization where innovation and partnerships merge to enable residents to enjoy a safe, healthy, and prosperous life. The Values section lists six core values: Clients and communities, Partnerships, Quality Services, Accountability, Fiscal prudence, and Organizational excellence. At the bottom of the graphic is a large, diverse group of people representing various professions and community members, including a firefighter, a veterinarian, a construction worker, a teacher, a parent, a nurse, a police officer, and a farmer.

Mission
Contra Costa County is dedicated to providing public services which improve the **quality of life** of our residents and the economic viability of our businesses.

Vision
Contra Costa County is recognized as a **world-class service organization** where innovation and partnerships merge to enable our residents to enjoy a safe, healthy and prosperous life.

Values
Contra Costa County **serves people,** businesses and communities. Our organization and each one of our employees value:

- Clients and communities
- Partnerships
- Quality Services
- Accountability
- Fiscal prudence
- Organizational excellence

SPONSORED BILLS AND LEGISLATIVE PRIORITIES

Sponsored Bill #1: Legislation to permit fire protection districts to establish by subcontract a partnership or alliance with a private emergency ambulance service provider for the provision of emergency ambulance services.

Sponsored Bill #2: Legislation to establish a pilot program for an alternative behavioral health crisis line for individuals to report issues related to mental health or a substance use disorder, and for individuals experiencing homelessness.

Budget Proposal #1: Budget request related to Contra Costa CARES to provide primary care services to undocumented adults in Contra Costa County.

Advocacy Priorities

- ✓ **COVID-19 Response and Economic Recovery**
- ✓ **Climate Change**
- ✓ **Health Care, including Mental Health, Behavioral Health and Substance Use Disorder (SUD) services**
- ✓ **Housing and Homelessness**
- ✓ **Justice Reform**
- ✓ **The Delta/Water and Levees**



PRINCIPLES AND POLICY STATEMENTS

Agriculture and Weights & Measures

- SUPPORT actions to ensure sufficient state funding for pest and disease control and eradication efforts to protect both agriculture and the native environment.
- SUPPORT funding for agricultural land conservation programs and agricultural enterprise programs, and revisions to State school siting policies to protect and enhance the viability of local agriculture.
- SUPPORT legislation to facilitate the efforts by the California Department of Food and Agriculture and the Department of Boating and Waterways to survey and treat all infestations in the Delta of invasive aquatic species through integrated pest management.
- SUPPORT legislation that preserves the integrity of the Williamson Act, eliminates abuses resulting in unjustified and premature conversions of contracted land for development, and fully restores Williamson Act subventions.
- SUPPORT legislation that would preserve or enhance protections now afforded to consumers for commercial transactions involving commercial weighing or measuring devices (scales, meters and scanners) or computed by point-of-sale systems.
- SUPPORT efforts to ensure sufficient funding for weights and measures programs that protect consumers and promote fair competition in the marketplace.

Animal Services

- SUPPORT actions to protect local revenue sources designated for use by the Animal Services Department; i.e., animal licensing, fines and fees.
- SUPPORT actions to protect or increase local control and flexibility over the scope and level of animal services. SUPPORT efforts to protect and/or increase County flexibility to provide animal services consistent with local needs and priorities.
- SUPPORT actions to protect against unfunded mandates in animal services or mandates that are not accompanied by specific revenue sources which completely offset the costs of the new mandates, both when adopted and in future years. SUPPORT efforts to ensure full funding of State animal services mandates.
- SUPPORT efforts to preserve the integrity of existing County policy relating to Animal Services (e.g., the Animal Control Ordinance and land use requirements).



Child Support Services

- SUPPORT recognition, promotion and enhancement of the child support program as a safety net program.
- SUPPORT efforts that create new child support collection tools and methods or enhance existing child support collection tools and methods. OPPOSE efforts that eliminate or limit existing child support collection tools and methods.
- SUPPORT efforts to increase funding for the child support program. OPPOSE efforts to reduce funding for the child support program.
- SUPPORT efforts that enhance or create new data collection tools and methods. OPPOSE efforts that eliminate or limit existing data collection tools and methods.

Climate Change

- ENSURE that the recovery from the COVID-19 pandemic supports the following:
 - ✓ Technologies that support the County's climate goals, including battery energy storage and microgrids, solar and wind energy, electric vehicles, and electric vehicle charging infrastructure;
 - ✓ Energy efficiency programs that encourage whole house retrofits and address asthma triggers in the built environment;
 - ✓ Planning work for adapting to rising sea levels;
 - ✓ Planning and implementation of microgrids;
 - ✓ Active transportation and green infrastructure programs;
 - ✓ Job training for careers in clean energy, clean transportation, and green infrastructure.
- SUPPORT actions that: address the impacts of climate change; support climate adaptation and resilience efforts; support the Green Business program; address the disproportionate impacts that some communities bear because they are located near large industrial facilities; reduce exposure to toxic air pollutants and greenhouse gases; study and recognize the health impacts of global and regional climate change; and study the economic, workforce and social impacts of transitioning away from fossil fuels.
- ENSURE that the implementation of AB 32 and successor bills results in harmony between the greenhouse gas reduction target created by the Air Resources Board for each regional/local agency, the housing needs numbers provided by the state Department of Housing and Community Development pursuant to housing element law, and the Sustainable Communities Strategy developed through the Regional Transportation Plan processes.



- SUPPORT efforts that favor allocation of funding and infrastructure from the California Climate Investments Program to jurisdictions within whose boundaries are the largest emitters of greenhouse gas, have vulnerable and/or disadvantaged communities that are disproportionately affected by climate change and environmental pollution, have Natural Community Conservation Plans or similar land conservation efforts that will address climate change and have demonstrated a local commitment to climate protection.
- SUPPORT revisions to the Public Resources Code and the Air Resources Board's Investment Plans to provide California Climate Investments funding for the conservation of natural lands, parks and open space through fee title acquisition as well as easements.
- SUPPORT efforts to expand eligible expenditures of the Climate Investments to investments in accessible transit/transportation systems (serving seniors, disabled, and veterans) which result in more efficient service and corresponding reductions in greenhouse gas production, and in investments in infrastructure and programs to promote active transportation, particularly bicycling and walking.
- OPPOSE changes to the California Environmental Protection Agency's protocols for designating disadvantaged communities which result in a reduction in the number or size of disadvantaged communities in Contra Costa County prioritized for receipt of California Climate Investment funds.
- SUPPORT efforts to ensure life-cycle costs are considered when planning new projects in the state.
- SUPPORT the autonomy of community choice aggregators (CCAs) in policymaking and decision-making. OPPOSE legislation and regulatory policies that unfairly disadvantage CCAs or CCA customers or reduce or undermine local decision-making autonomy by the CCA.
- SUPPORT continuing development of local renewable energy resources and supply, including protection of local autonomy to administer energy efficiency programs and install and utilize integrated distributed energy resources, and SUPPORT effective leveraging of energy efficiency programs tailored to address local needs and concerns.
- SUPPORT complete transparency of all energy procurement practices, stranded costs, and departing load charges; fair competition in statewide energy markets for community choice aggregators (CCAs) and municipal or other publicly owned utilities; legislation and regulatory policies that protect CCA customers from improper cost allocation; and OPPOSE legislation that conflicts with or diminishes CCA procurement autonomy.
- SUPPORT requirements for investor-owned and public energy utilities to provide local governments with energy usage data for all facilities in their jurisdictions for purposes of developing inventories of greenhouse gas emissions within their boundaries.
- SUPPORT resources for local governments to use in addressing impacts of rising water levels caused by a warming climate.



The Delta

- PROTECTION and RESTORATION of a healthy sustainable Delta ecosystem including adequate water quality, inflow and outflow, and water supply, to support fisheries, wildlife and habitat in perpetuity and managing or eradicating invasive species.
- RESPECT and SAFEGUARD Delta Counties' responsibilities related to land use, water resources, flood management, tax revenues, public health and safety, economic development, agricultural stability, recreation, and environmental protection in any projects, policies, or operations.
- SUPPORT rehabilitation, improvement, and maintenance of levees throughout the Delta.
- SUPPORT the Delta pool concept, in which the common resource provides quality freshwater supply to all Delta users, requiring mutual responsibility to maintain, restore, and protect the common resource.
- REPRESENT and include local government in any governance structures for the Delta.
- OPPOSE isolated conveyance.

Economic Development

- ADVOCATE for jobs-oriented incentive programs for jurisdictions that have met their Regional Housing Needs Assessment (RHNA) numbers. State legislators will continue to advance bills that make it easier to build housing, but it would also benefit the county to have those streamlining measures apply to jobs-oriented development like office and advanced manufacturing as well.
- SUPPORT an amendment to the California Competes Tax Credit program guidelines to consider qualifying low-income census tracts within unincorporated areas of a county in the enhanced scoring category.

Elections

- SUPPORT full state reimbursement for state mandates imposed upon local registrars by the Secretary of State, including special state elections.

Emergency Preparedness, Emergency Response

- ADVOCATE for disaster recovery funding that addresses tax backfills, debris removal, resiliency, forest health, and economic assistance. SUPPORT legislation that will improve forest management and emergency communications systems.
- SUPPORT funding for defensible space inspections, community wildfire risk mitigation, and for hardening of existing homes from wildfire exposure.
- SUPPORT more authority to train volunteers, provide funding for Community Emergency Response Training (CERT), and help clean-up oil spills without taking on additional legal liability.
- SUPPORT a sales tax exemption for public safety related apparatus and/or equipment over a certain value (e.g., \$250,000).
- SUPPORT exemptions from CEQA for wildfire risk mitigation projects and Essential Services Facilities (ESF) such as fire stations, and exemptions from fees and air quality limitations for emergency generators at fire stations.
- SUPPORT changes to EMS regulations that hinder the transport of patients to alternate destinations, provide community paramedicine programs, and engage in other programs that alter or enhance the delivery of 911 emergency ambulance transport.
- SUPPORT a permanent resolution to the reimbursement for air ambulance providers.
- ENSURE that development impact fees provide adequate funding for public safety facilities and ongoing operations.
- SUPPORT legislation to improve telephone access or back-up during emergencies.
- SUPPORT actions that increase the safety of the shipment of hazardous materials by pipeline through better monitoring, technical seismic vulnerability studies, leak detection, operational practices, and equipment.

Flood Control and Clean Water

- SUPPORT legislation that would improve integration of planning between member agencies of an Integrated Regional Water Management Planning group, thereby increasing multi-benefit projects.
- SUPPORT legislation that would require Metropolitan Planning Organizations to integrate local and regional stormwater needs into their regional transportation planning process.

Finance and Administration

- SUPPORT the State's effort to balance its budget through actions that do not adversely affect County revenues, services, or ability to carry out its governmental responsibilities.
- OPPOSE any state-imposed redistribution, reduction or use restriction on general purpose revenue, sales taxes or property taxes unless financially beneficial to the County.
- OPPOSE efforts to limit local authority over transient occupancy taxes (TOT).
- OPPOSE any efforts to increase the County's share-of-cost, maintenance-of-effort requirements or other financing responsibility for state-mandated programs, absent new revenues sufficient to meet current and future program needs.
- SUPPORT efforts to ensure that Contra Costa County receives its fair share of state allocations.
- SUPPORT efforts to receive reimbursement for local tax revenues lost pursuant to sales and property tax exemptions approved by the Legislature and the State Board of Equalization.
- SUPPORT efforts to reform the state/local relationship in a way that makes both fiscal and programmatic sense for local government and conforms to the adopted 2010 CSAC Realignment Principles, with an emphasis on maximum flexibility for counties to manage the existing and realigned discretionary programs.
- SUPPORT a reduction in the 2/3rd vote requirement to 55% voter approval for locally-approved special taxes that fund health, education, economic, stormwater services, library, transportation and/or public safety programs and services.
- SUPPORT efforts to authorize counties to impose forfeitures for violations of ordinances, as authorized for cities.
- SUPPORT efforts to redefine the circumstances under which commercial and industrial property is reassessed to reduce the growing imbalance between the share of overall property tax paid by residential property owners versus commercial/industrial owners.
- SUPPORT efforts to reduce County costs for Workers' Compensation, including the ability to control excessive medical utilization and litigation.
- SUPPORT actions that maximize federal, state and local revenues for county-run services and programs.



- SUPPORT legislative compliance with both the intent and language of Proposition 1A.
- OPPOSE efforts of the state to avoid state mandate claims through the practice of repealing the statutes then re-enacting them. SUPPORT timely, full payments to counties by the state for programs operated on their behalf or by mandate.
- SUPPORT full state participation in funding the County's retiree and retiree health care unfunded liability.
- OPPOSE the establishment of specific or stricter standards for the use of personal services contracts by counties that would make contracting with community-based organizations more difficult.
- ENABLE the use of Progressive Design-Build project delivery for construction contracts.
- ENABLE local governments to continue offering opportunities for public meeting attendance, participation, and accessibility through technological means after the pandemic has ended.
- SUPPORT legislation that will facilitate more efficient and effective public service delivery and financial management under alternative governance and administrative structures supported by the Board.

Health Care

- SUPPORT legislation and administrative policy changes that will continue into the future the flexibilities in use of Telehealth services that have so benefited our community during the Public Health Emergency.
- SUPPORT state action to increase health care access and affordability.
- SUPPORT Medi-Cal reimbursement rate increases to incentivize providers to participate in the program. SUPPORT Medi-Cal reimbursement rate increases through Proposition 56 funding to provide quality reproductive health care services.
- SUPPORT reimbursement for a maximum of 2 visits taking place on the same day at one location if the patient suffers illness/ injury requiring additional diagnosis/ treatment, or if the patient has a medical visit and mental health or dental visit.
- SUPPORT actions that address provider shortages (including physicians, particularly specialists, and nurses). Innovative programs, such as loan forgiveness programs, should be expanded.



- SUPPORT actions that implement comprehensive systems of care, including case management, for frequent users of emergency care and those with chronic diseases and/or dual (or multiple) diagnoses.
- SUPPORT actions that provide sufficient time for detailed data gathering of current safety net funding in the system and the impact of any redirection of funds on remaining county responsibilities.
- SUPPORT measures that maximize federal reimbursement from Medicaid and S-CHIP.
- SUPPORT state action to implement a Medi-Cal waiver in a manner that maximizes the drawdown of federal funds for services and facilities, provides flexibility, and ensures that counties receive their fair share of funding.
- SUPPORT actions to extend Drug Medi-Cal and Minor Consent Medi-Cal Coverage to incarcerated youths, many of whom are in custody due to drug related crimes.
- SUPPORT coverage of medically necessary alcohol and substance use related disorder treatment at the same level as other medical conditions.
- SUPPORT legislation that extends the restrictions and prohibitions against the smoking of, and exposure to, tobacco products; and the promotion of cessation among young people and adults.
- SUPPORT actions that further align a statewide regulatory framework for the commercial cannabis industry and that continue to authorize local jurisdictions to adopt more restrictive measures to protect the health, safety and welfare of their residents. OPPOSE legislation and state regulation that seeks to weaken or eliminate local control over the commercial cannabis industry.
- SUPPORT necessary County infrastructure and adequate funding related to education, regulation, testing and enforcement functions associated with cannabis regulatory controls.
- SUPPORT restricting the sale and use of powdered alcohol and other similar products marketed to youth; restrictions on advertising of marijuana products targeting youth and near places frequented by youth or alcohol and other drug treatment facilities.
- SUPPORT legislation that extends the restrictions and prohibitions against the smoking of, and exposure to, marijuana products in various places, including, but not limited to, places of employment, school campuses, public buildings, day care facilities, multi-family housing, health facilities, alcohol and other drug treatment facilities, and homeless shelters.
- SUPPORT actions to seek a state ban on electronic devices that deliver flavored e-liquids as well as the e-juice itself.

- SUPPORT actions aimed at reducing the misuse of prescription drugs, most especially opioids, and increase prevention and treatment of opioid disorders to eliminate overdoses and combat the opioid epidemic.
- SUPPORT population-based chronic disease prevention efforts such as the creation and funding of a State Wellness Trust.
- SUPPORT developing a workforce with gerontological expertise to manage the exponential growth in the chronically ill aging population.
- SUPPORT efforts that would advance a Health-In-All-Policies approach to policy work done across the County. This implies consideration of how health is influenced by the built environment and a connection with land use planning and development.
- SUPPORT ongoing study of the health impacts of global and regional climate change and ongoing countywide mitigation and adaptation efforts.
- SUPPORT actions that would preserve the nature and quality and continuity of care associated with safety net services historically provided at the local level, such as the California Children's Services (CCS) and Child Health and Disability Prevention (CHDP) programs.
- SUPPORT actions that promote aging in place through the utilization of long-term supports and services and caregiver support services.
- SUPPORT increasing the level of funding for Long-Term Services and Supports (LTSS) and Home and Community Based Services (HCBS) to meet the increase in cost to provide services and to meet the tremendous increase in the aging population.
- SUPPORT funding, streamlined processes, and greater flexibility for use of state and federal funding to respond to Public Health Emergency Preparedness initiatives including Pandemic Influenza, emerging diseases, and continued funding for all categories related to Public Health Preparedness.
- SUPPORT increased funding and policy changes for Tuberculosis (TB) prevention and treatment to reflect the increased risk of transmission faced across the Bay Area.
- SUPPORT increased funding for the public health infrastructure, capacity and prevention services.
- SUPPORT Local Public Health Departments as an authorized provider for direct billing reimbursement related to the provision of Immunization, Family Planning, HIV, STD and TB services.
- SUPPORT the reversal of the pre-emption language regarding local Menu-Labeling that is included the Affordable Care Act.

- SUPPORT enhanced funding and capacity for public health programs.
- SUPPORT efforts to strengthen needle exchange programs as part of an overall program to combat the spread of HIV and other diseases.
- SUPPORT legislative efforts to reduce or eliminate lead and toxic substances in consumer products, particularly those used by infants and children.
- SUPPORT funding, policy and programs dedicated to suicide, injury and violence prevention.
- SUPPORT legislation to tax certain beverages that contain added sugars.
- SUPPORT efforts that support healthy meals, adequate meal time, and increased physical activity/education for school-age children.
- SUPPORT funding that sustains and expands non-infrastructure *Safe Routes to School* programs that educate students, parents, and school staff about safe walking and bicycling to school.
- SUPPORT efforts to address the underlying determinants of health and health equity, such as housing and prevention of displacement, educational attainment and livable wage jobs, and accessible transportation.

Homeless Services


- SUPPORT the continuation and expansion of funding for fair and equitable affordable housing, homelessness assistance and prevention programs, and strategic local and regional responses to homelessness that promote transparency, equity and data informed decision-making and enhance access to resources that support the County's compliance with federal and state anti-homelessness and anti-poverty initiatives and requirements.
- SUPPORT increasing and maintaining affordable housing stock and housing stability by way of supporting funding, policy, or regulations that promote fair and equitable housing for the most vulnerable low, very low, and extremely low-income households, including the acquisition, production and preservation of various housing types and the protection of stable housing for vulnerable persons experiencing homelessness.
- SUPPORT removal of barriers in planning processes, regulatory frameworks, funding programs, healthcare access, and policy to promote increased equity, innovation, transparency and data-driven approaches to addressing homelessness and housing affordability, with the goals of increasing affordable housing and eliminating discrimination and disparate treatment of individuals based on race, ethnicity, gender, gender identity, sexual orientation, ability, housing status, income, or other household characteristics.



- SUPPORT a wide variety of housing types and formats, for all persons regardless of personal characteristic or status, and actively promote the equitable distribution and access to affordable units and holistic services, in line with evidence-based practices, to ensure the elimination of discrimination and disparate treatment of individuals, particularly vulnerable individuals and those from communities of color.
- SUPPORT increasing funding, policy, and regulations for disaster planning and relief efforts that allow the County and the County's homeless system to plan for and equitably respond to disasters and pandemics, including for purposes of supporting the health and safety of providers and persons experiencing homelessness, particularly the most vulnerable and those from communities of color.

Human Services

Older Adults

- SUPPORT actions that promote individual choice by easing access to In Home Supportive Services (IHSS). SUPPORT funding to reduce the intake wait-time for eligibility and delivery of in-home care.
 - SUPPORT allowing counties to use alternative IHSS reassessment approaches including, but not limited to, telephonic reassessments.
 - SUPPORT programs that increase seniors' access to technology and internet connection.
 - SUPPORT fully funding the administration of IHSS.
- 
- SUPPORT funding to recruit, train, and retain IHSS home health care workers. SUPPORT increased state investment in livable wages for IHSS care providers.
 - SUPPORT actions to provide respite for caregivers.
 - SUPPORT the creation of funding opportunities and policies which promote the development of aging-friendly communities.
 - SUPPORT actions that strengthen the capacity and funding of Adult Protective Services (APS) to address all forms of abuse and neglect.
 - SUPPORT funding to expand services for older adults and people with disabilities.
 - SUPPORT actions to promote the safety of social workers and all in-home care providers.

Safety Net Programs

- OPPOSE actions that result in reduced level of services to families, children, adults and seniors, or that lead to preemption of local control.
 - SUPPORT continuous investment in safety net programs, including the California Earned Income Tax Credit (Cal EITC) and the Supplemental Security Income/State Supplementary Payment (SSI/SSP) Program.
 - SUPPORT fully funding administrative costs for administering programs. SUPPORT continued flexibilities and waivers in benefits program administration for the benefit of individuals and families who are struggling.
 - SUPPORT actions to improve and expand access to food, including emergency food assistance networks (e.g. local food banks, and food pantries), increasing the amount and flexibility of CalFresh and other local assistance programs.
 - SUPPORT actions to streamline benefit applications, align verifications between programs, and have the same appointment for multiple applications.
- IMPACTED BY WILDFIRES?
APPLY FOR CALFRESH TODAY!**

If you are in need of food now, visit your local food bank

 - Contra Costa: Food Bank for Contra Costa & Solano
 - Lake: Clear Lake Gleaners, Inc
 - Mariposa: Mariposa Merced County Food Bank
 - Monterey: Food Bank for Monterey County
 - Napa: Community Action of Napa Valley
 - Nevada: Food Bank of Nevada County
 - San Bernardino: Community Action Partnership of San Bernardino County
 - Santa Barbara: Foodbank of Santa Barbara County
 - Santa Clara/San Mateo: Second Harvest of Silicon Valley
 - Santa Cruz: Second Harvest Food Bank serving Santa Cruz
 - Sonoma: Redwood Empire Food Bank
 - Tuolumne: Amador-Tuolumne Community Action Agency
 - Yolo: Yolo Food bank

CalFresh
FOOD
- SUPPORT the ease of data sharing and coordination of care across safety net programs, including those administered by the Health Department, such as WIC.
 - SUPPORT actions to ease access to Medi-Cal and its services.
 - SUPPORT actions which would expand eligibility to CalWORKS.
 - SUPPORT increased access to employment training programs and subsidized work programs for vulnerable populations, including access to community colleges.
 - SUPPORT establishing a General Assistance Program with a state share of funding.
 - SUPPORT actions to create whole family care through a more comprehensive safety net of services that enable families to be stable and have economic opportunities.
 - SUPPORT research that describes and assesses local service needs and gaps.

Child Welfare Services

- SUPPORT funding for services that stabilize children and families in the foster care system.

- SUPPORT full funding of efforts to support the Continuum of Care Reform.
- SUPPORT initiatives which would expand benefits and support for reunified families.
- SUPPORT restorative justice and healing-centered framework initiatives and programs that seek to eliminate the school-to-prison pipeline and end the criminalization of youth.
- SUPPORT funding and initiatives to support children's mental health and studies on the long-term impacts of COVID-19 on the physical and mental health of adults and children.

Early Childhood Development

- SUPPORT legislation to expand early childcare, education, mental health and other comprehensive services and holistic approaches.
- SUPPORT increased funding and support preschool enrichment programs with family engagement to provide quality care and parent education in early life.
- SUPPORT policies and systems changes to foster holistic family and early childhood development and resilience.
- SUPPORT early childhood home visitation to enhance parenting skills and promote health child development.
- SUPPORT early childhood mental health and trauma prevention programs.



Violence Prevention

- SUPPORT actions that seek to address the impact of gun violence, domestic violence, sexual assault, human trafficking, elder abuse and child abuse.
- SUPPORT actions that seek to prevent the underlying causes of all forms of violence and invest in upstream strategies.
- SUPPORT actions to increase cross-agency and cross-system collaboration on cases involving violence, including the sharing of confidential or protected information in multidisciplinary team settings.
- SUPPORT actions to reduce the effects of toxic stress, trauma, and adverse childhood experiences.
- SUPPORT alternatives to the criminal justice system that center community and survivor needs.

- SUPPORT actions to support successful transition from incarceration and detention to the community.
- SUPPORT increase in funding for Lethality Assessment Protocols and reallocation strategies to support other prevention and social services.

Immigration, Equity and Inclusion

- SUPPORT the continued expansion of benefits and services for immigrants, refugees, and asylum seekers regardless of immigration status. SUPPORT efforts to expand full scope Medi-Cal to include Deferred Action for Childhood Arrivals (DACA) youth, seniors, and all remaining uninsured residents regardless of their immigration status.
- SUPPORT increased language access and culturally responsive social services for all immigrants. SUPPORT funding for the hiring and training of bilingual-bicultural social case workers.
- SUPPORT actions to assist immigrants who experience domestic or sexual assault to receive resources, including services to prevent homelessness, and legal resources to help attain citizenship.
- SUPPORT funds for education and outreach to engage immigrants, refugees, asylum-seekers, and non-legal status communities to help them access benefits, mitigate concerns around public charge, and address other issues related to their enrollment to safety net programs
- OPPOSE any changes that may penalize immigrants for using vital public benefits they are legally allowed to access. OPPOSE any changes to sponsor requirements which add limiting threshold criteria.
- SUPPORT funding and other resources for day labor programs and other workforce development programs that serve immigrant communities and undocumented workers.
- SUPPORT actions that would eliminate systemic racism and structural inequities, including efforts to refocus Medi-Cal and other social safety net programs toward reducing health disparities.



Justice Systems

- SUPPORT justice reform efforts that reduce racial and ethnic disparities.
- SUPPORT justice reform efforts that reduce barriers to success for system-involved youth and adults. SUPPORT legislation that encourages and increases youth engagement.
- SUPPORT justice reform legislation that recognizes adolescent brain development and the unique needs of transition-aged youth.
- SUPPORT an ongoing commitment to investing in community based organizations and community alternatives to incarceration and detention.
- SUPPORT legislation to restore pretrial detainee access to federal health benefits.
- SUPPORT legislation raising the maximum age limit for juvenile court jurisdiction, allowing youths to remain on juvenile probation supervision through age 24, with an elevated focus on rehabilitation and restorative justice.
- SUPPORT local flexibility and funding to implement justice diversion programs.
- OPPOSE legislation that would shift the responsibility of parolees from the state to the counties without adequate notification, documentation and funding.
- SUPPORT legislation that will help counties implement 2011 Public Safety Realignment as long as the proposal would provide for county flexibility, eliminate redundant or unnecessary reporting, and would not transfer more responsibility without funding.
- SUPPORT legislation that will combat the negative impact that human trafficking has on victims in our communities, including the impact that this activity has on a range of County services and supports, and support additional tools, resources and funding to help counties address this growing problem.
- SUPPORT legislative reform of current bail provisions that will replace reliance on money bail with a system that incorporates evidence-based pretrial release decisions. ADVOCATE for funding for any new or revised responsibilities for counties, including the assessment and supervision of people charged with crimes.
- SUPPORT legislation that provides a solution to addressing the problems of metal theft and abandoned and trespassing vessels and ground tackle.



Land Use/Community Development/Natural Resources

- ASSIST in the development and preservation of low and moderate income housing through support of programs that: 1) provide access to federal, state and local financing, 2) ensure timely review of residential projects, 3) provide financial and/or regulatory incentives where feasible and appropriate to offset or reduce the costs of affordable housing development, and 4) promote the re-use of existing publicly-owned assets.
- MAINTAIN local agency land use authority.
- SUPPORT ways to streamline overall compliance with State legislation, while opposing efforts to expedite a particular development project.
- ENSURE Contra Costa residents of all income categories have access to adequate housing.
- GROW more jobs countywide, particularly in those parts of the County with the longest commutes and most acute jobs-housing imbalance.
- SUPPORT historically under-invested communities in their equitable economic growth.
- IDENTIFY new or enhanced revenue to support residents' quality of life.
- ESTABLISH, fund and support locally-controlled resource permitting to streamline economic development activities and conserve and recover species and the habitats upon which they depend, natural resources, watersheds and open space.
- SUPPORT legislative actions that reduce the risk to students from the accidental release of hazardous materials by requiring risk assessments that account for all sources of hazardous materials as part of school siting and rebuilding decisions.
- SUPPORT legislative actions to evaluate, clean up, and redevelop contaminated sites.



Library

- SUPPORT State funding for the operation of public libraries, including full funding of the Public Library Fund (PLF) and the California Research and Education Network (CalREN).
- SUPPORT State bonds for public library construction.
- SUPPORT funding for the California Library Literacy and English Acquisition Services Program, which provides matching funds for public library adult literacy programs that offer free, confidential, one-on-one basic literacy instruction to English-speaking adults who want to improve their reading, writing, and spelling skills.



Telecommunications and Broadband

- SUPPORT preservation of local government ownership and control of the local public rights-of-way and ensure reasonable compensation for their use.
- SUPPORT continued funding for Public, Educational and Government Access (PEG) channels to provide local community access and benefits and increase flexibility in the use of PEG funds.
- ENSURE nondiscriminatory treatment of Public, Educational and Government Access Channels by Cable System Operators.
- SUPPORT the expansion of broadband (high speed internet service) to drive economic development and job opportunities, support county service delivery, and improve health, education and public safety outcomes for residents.

Transportation

- PROVIDE an integrated, multi-modal transportation system that safely and efficiently meets the transportation needs of all economic and social segments of the County and provides for the transport of goods and services throughout Contra Costa County.
- EMPHASIZE the efficient use of the existing transportation system and cost-effective enhancements to this system. New and emerging policy direction includes an increase in the support for active transportation modes, support for the development of aging-friendly communities, and a decreasing emphasis on automotive capacity expanding projects which increase greenhouse gas production.
- SUPPORT the provision of a safe, reliable, efficient, and accessible transportation system that balances social, environmental, and economic needs of the County.
- SUPPORT increased flexibility in the use of transportation funds.

- Increased regional coordination, while reflecting local input, is necessary for public transit (paratransit and fixed route), roads, trails, advanced mobility technology, and greenhouse gas reduction related projects.
- ENSURE complete life-cycle costs, including an emphasis on environmentally friendly construction resources, are considered during state and local project development.
- SUPPORT improvements in safety throughout the transportation system, specifically for vulnerable users of the system (children, pedestrians, cyclists, etc.).
- PROMOTE the streamlining of transportation safety projects.
- SUPPORT actions to put in place local planning coordination mechanisms and requirements for state funded or regulated facilities such as schools, roads, courts, jails, and OPPOSE efforts to compromise the County's road authority and the ability to protect public health, safety, and welfare.
- SUPPORT regional, coordinated aviation transportation planning efforts to improve service delivery and to provide options to the surface transportation system for people and goods movement.
- SUPPORT actions to increase waterborne transport of goods, in particular relative to the San Francisco to Stockton Ship Channel.
- SUPPORT measures to enhance rail safety with an emphasis on; increased state oversight of railroad bridges, funding for first responder training, funding to improve rail safety and prevent rail trespass fatalities, improved regulations for tank car safety standards, and data sharing requirements between state emergency managers, local responders, and rail operators.
- OPPOSE linking transportation funding to housing production.
- OPPOSE reducing or eliminating development impact fees (without secured backfill) in an effort to increase housing production.
- INCREASE requirements for coordination between transportation agencies and utilities.
- SUPPORT funding increases for active transportation projects and planning with an emphasis on facilities and investments that increase the likelihood of a mode shift away from automobiles.



- PROVIDE resources to facilitate the deployment of electric vehicles and electric vehicle charging infrastructure, including funding for vehicles, chargers, and facility upgrades, and improvements to the electric distribution and transmission grids to safely accommodate increased load.
- SUPPORT actions to increase and improve waterborne transportation of goods when it increases safety.

Veterans

- SUPPORT legislation and budget actions that will continue the state's annual local assistance for County Veterans Service Offices at a minimum of \$11 million.
- SUPPORT legislation and funding that will provide veterans organizations with resources to operate and make necessary repairs to, or replacement of, their meeting halls and facilities.
- SUPPORT legislation that will improve the timeliness and quality of both VA benefits claim decisions and VA healthcare services.



Waste Management

- MAINTAIN the County's existing discretionary authority over matters pertaining to waste management, recovery and disposal. ENSURE new or expanded responsibilities are not imposed on the County, either directly or indirectly, without providing statutory authority to guarantee funding to implement actions necessary to adequately enforce or comply.
- SUPPORT legislation that provides new or additional funding sources for local implementation of applicable solid waste and waste diversion mandates.
- SUPPORT legislation to provide alternative management standards for the Treated Wood program at the Department of Toxic Substance Control so treated wood could be processed at Class II landfills and transfer stations with a composite line.
- SUPPORT legislation that:
 - ✓ Protects local decision-making authority regarding solid waste facility siting;
 - ✓ Protects local solid waste franchising authority;
 - ✓ Expands local solid waste and recycling fee-setting authority;
 - ✓ Protects local governments' authority to direct the flow of waste; and
 - ✓ Seeks to remedy lack of sufficient authority to address statutory responsibilities.
- SUPPORT legislation promoting the diversion of recyclables and organics from landfills unless burdensome or impractical for local governments to implement.

- SEEK more robust local regulatory and enforcement authority relative to the storage, transport, processing, recovery and disposal of waste within our jurisdictional boundaries.
- SUPPORT statewide regulation for hauling solid waste and enforcing increased penalties for illegal dumping.
- SUPPORT legislation that prioritizes, incentivizes, and innovates waste reduction and reuse practices of the waste hierarchy over traditional recycling.
- SUPPORT actions to improve and diversify markets for recyclable materials and that encourages:
 - ✓ Solutions to global policy reforms and development of local recycling markets;
 - ✓ Creation of economic incentives for the use of recycled materials;
 - ✓ Increased use of recycled content in products manufactured or sold in California; and
 - ✓ Increased use of materials that are biodegradable and compostable.
- OPPOSE legislation that requires diversion of materials for which there is not adequate markets.
- ENSURE manufacturers are held accountable for proper end-of-life management of products and packing materials they produce, including pharmaceuticals, batteries, sharps, and veterinary medicine, to create effective producer-lead reduction, reuse and recycling programs and foster more environmentally sustainable product/packaging design and reduce the quantity of harmful pharmaceuticals (including veterinary medicine) that ultimately enter wastewater treatment facilities, bodies of water, and landfills.
- SUPPORT actions that will shift the financial burden of end-of-life management of products from individuals to producers and sellers.
- SUPPORT statewide regulation and enforcement to limit production or sale of items that negatively impact the environment or human health.
- SUPPORT legislation that protects human health and the environment from exposure to hazardous materials and hazardous wastes.
- OPPOSE actions that require counties to site, fund, approve, build and/or operate organic processing facilities, including composting operations.
- SUPPORT actions to protect and expand waste diversion credits or disposal reduction credits.



- SUPPORT the development of conversion technologies as an alternative to land filling and provides state funding to local jurisdictions for such projects; and, provides that all energy produced by such projects be designated as renewable energy.
- SUPPORT new or additional funding for expanded recycling and organics processing infrastructure.
- SUPPORT funding for CalRecycle to assist in the implementation of laws focused on diverting organic and recyclable waste from landfill.
- SUPPORT state investment in expanded clean composting, anaerobic digestion and recyclable materials manufacturing.
- SUPPORT legislation to enable additional food rescue and recovery of edible food, including expansion of good Samaritan laws, and support legislation that establishes funding for food recovery programs and develops policies for safe but consistent food date labeling.
- SUPPORT legislation that provides for less burdensome recovery of Household Hazardous Waste.

Workforce Development

- SUPPORT increasing the flexibility of Workforce Development Board spending and ability to partner with community agencies and other county bureaus to increase supportive services and respond to local workforce needs.
- SUPPORT establishing a higher minimum wage. SUPPORT paid and job-protected leave policies.
- SUPPORT funding for wage stipends for COVID positive workers and other direct cash assistance to COVID impacted families, most critically for ethnic-racial minority front line workers in the non-benefited employment sector.
- SUPPORT increased teacher training and education, including funding to support employees to obtain a teaching credential.
- SUPPORT policies and programs that increase economic opportunity for women and improve gender equity.
- SUPPORT actions that promote training, capacity building and deeper understanding for students, educators and county staff on trauma informed care, interpersonal violence, adverse childhood experiences, and healthy workplaces and schools.
- SUPPORT expansion of education and educational materials in multiple languages related to labor rights, wage theft, proper compensation, and other work-related issues for all workers.

